

# Rogue One Hat

by Mrs. Luedeke

## Size

Finished Size	(woman):	18.5in around, 8.1in height
	(man):	21in around, 9.1in height
Gauge	(woman):	26 st/4in(10cm)
	(man):	23 st/4in(10cm)
Needle Size	(woman):	#4 (3.5mm) circular needles
	(man):	#6 (4.0mm) circular needles

## Materials

Yarn:

### SPORT WEIGHT

KnitPicks Comfy Sport

one skein of each color:

Main Color (MC)

Alternate Color 1 (A1)

Alternate Color 2 (A2)

Yarn needle

Stitch markers (optional)

## Difficulty

This pattern uses two-color stranding with long floats. This pattern also is knit in the round with circular knitting needles.

## Stitch Abbreviations

K = knit                      K2tog = knit 2 together                      () = repeat  
M1 = make 1                PM = place stitch marker (optional)

## Notes

Needle size and yarn yardages are approximate. Please check gauge for best accuracy. Make 1 can be done by knitting into the front of the stitch and then the back (kfb) or any other make 1 stitch you prefer.

*Text and images Copyright © 2016 by Mrs. Luedeke LLC, all rights reserved. Finished products created with this may be used for sale. Pattern credit is appreciated. This pattern is not in anyway associated with any official Star Wars branding. It's a fan-made fun hat, provided free of charge.*



## Directions

Using MC, cast on 96 stitches using long tail cast on. Join in the round, being careful not to twist the stitches. PM to mark end of round.

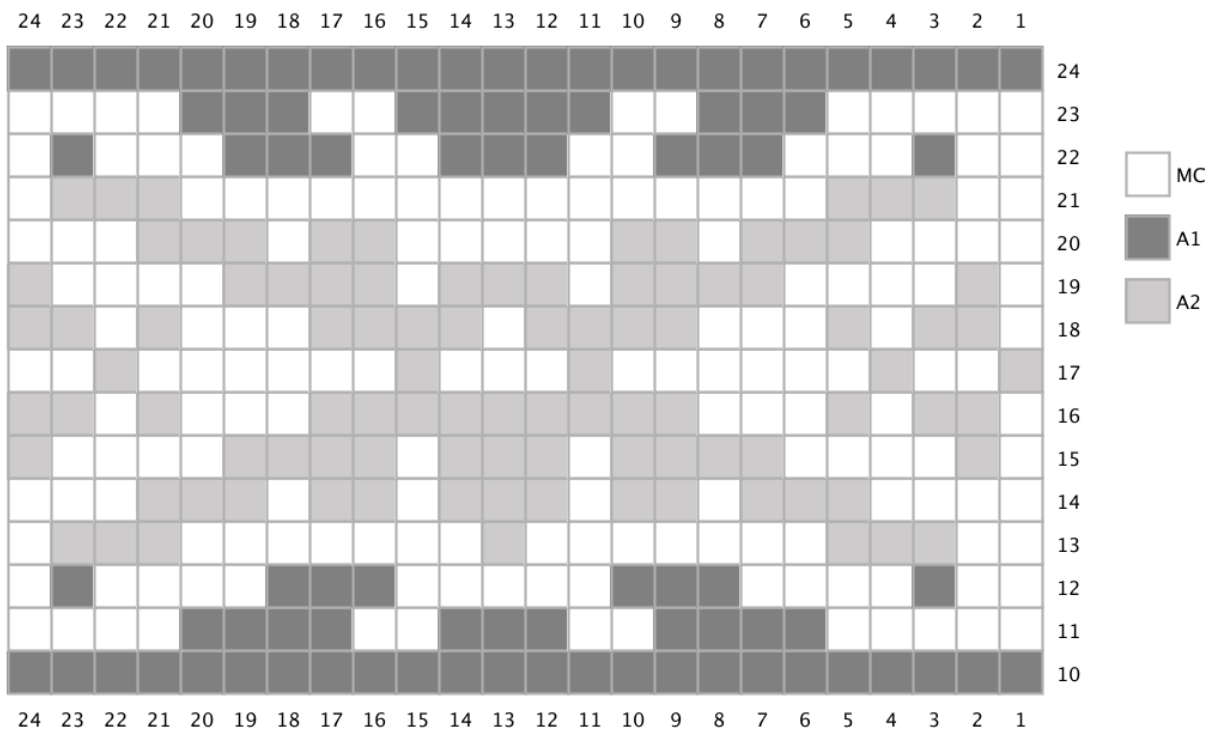
*\*\* If you find the hat band is too loose or you just want a more snug fit at the bottom, use size #3 (4.25mm) needles for woman size or size #5 (3.75mm) needles for a man size to cast on and for the first 8 rows.*

Round 1-8: Using MC, (K1, P1) around. (96 sts)

Round 9: (K4, M1) around. (120 sts)

Round 10-24: Join A1. Work Chart 1 around. Join A2 on Round 13. Finish off A1 upon completion. (120 sts)

## Chart 1 (X-wing)

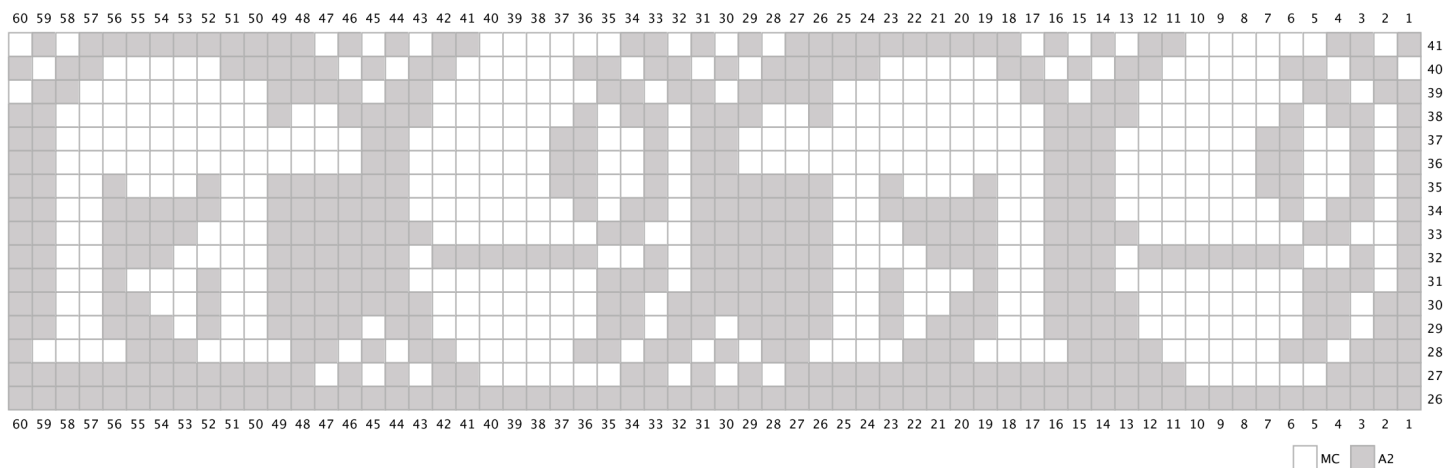


Round 25: Using MC, K around.(120 sts)

Round 26-41: Using MC and A2, Work Chart 2 around. (120 sts)

*Text and images Copyright © 2016 by Mrs. Luedeke LLC, all rights reserved. Finished products created with this may be used for sale. Pattern credit is appreciated. This pattern is not in anyway associated any official Star Wars branding. It's a fan-made fun hat, provided free of charge.*

## Chart 2 (AT-AT/Death Star)



— Start Decreases —

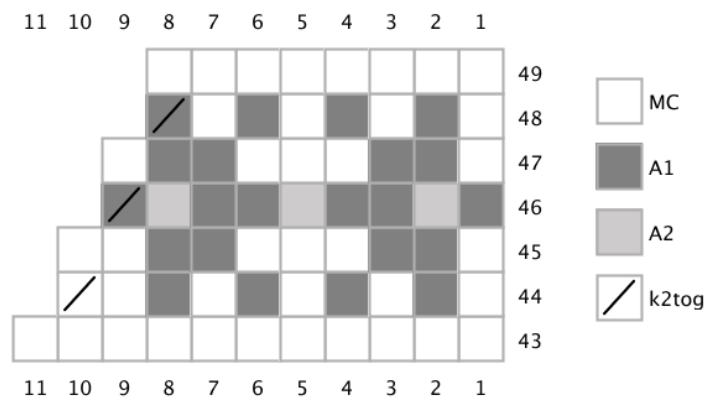
\*\* Use magic loop when the decreases are too small for circular needles

\*\* At this point, your hat length should measure 5.5" (13.9 cm) for a woman, and 6.1" (15.5 cm) for a man.

Round 42: Using A2, (K10, K2tog, PM) around. (110 sts)

Rounds 43-49: Using MC, A1, and A2, work Chart 3 around. Join A1 on Round 44. Finish off A1 after Round 48. (110, 100, 100, 90, 90, 80, 80 sts)

## Chart 3



*Text and images Copyright © 2016 by Mrs. Luedeke LLC, all rights reserved. Finished products created with this may be used for sale. Pattern credit is appreciated. This pattern is not in anyway associated any official Star Wars branding. It's a fan-made fun hat, provided free of charge.*

Round 50: (K6, K2tog) around. (70 sts)

Round 51: K around. Finish off MC. (70 sts)

Round 52: Using A2, (K5, K2tog) around. (60 sts)

Round 53: K around. (60 sts)

Round 54: (K4, K2tog) around. (50 sts)

Round 55: K around. (50 sts)

Round 56: (K3, K2tog) around. (40 sts)

Round 57: (K2, K2tog) around. (30 sts)

Round 58: (K1, K2tog) around. (20 sts)

Round 59: K2tog around. Remove stitch markers, if using. (10 sts)

Cut a long tail, and use a yarn needle to put the tail through the remaining 10 stitches, removing them off the knitting needle as you put the stitch on the yarn needle. Pull tight, and weave in all ends.

Optionally, add a pom-pom!

Wet block hat for best results.