

# A PokéHat

*All Variations, by Mrs. Luedeke*

## Size

Finished Size	(woman):	18.5in around, 8.25in height
	(man):	21in around, 9.25in height
Gauge	(woman):	26 st/4in(10cm)
	(man):	23 st/4in(10cm)
Needle Size	(woman):	#4 (3.5mm) circular needles
	(man):	#6 (4.0mm) circular needles

## Materials

Yarn:

### SPORT WEIGHT

Silke Arvier Witico

879 (MC) any color (see notes)	90yds
9142 (R) red	20yds
200 (B) black	25yds
100` (W) white	30yds

Yarn needle

Stitch markers (optional)

## Difficulty

This pattern uses two-color stranding with long floats. This pattern also is knit in the round with circular knitting needles.

## Stitch Abbreviations

K = knit                      K2tog = knit 2 together                      () = repeat  
M1 = make 1                      PM = place stitch marker (optional)

## Notes

Thank you to **StacyAce**, **mimouna**, **j-i-m-i-n-i**, **RobinMSK**, and **ValleyGirl** for helping test! Needle size and yarn yardages are approximate. Please check gauge for best accuracy. Make 1 can be done by knitting into the front of the stitch and then the back (kfb) or any other make 1 stitch you prefer.



*Mrs Luedeke LLC*



*Text and images Copyright © 2016 by Mrs. Luedeke LLC, all rights reserved. Finished products created with this may be used for commercial sale. Pattern credit is appreciated. This pattern is not in anyway associated with Nintendo or any official Pokémon branding. It's a fan-made fun hat, provided free of charge.*

There are five variations to this hat: Caution, Go, Instinct, Valor, and Mystic. Pick your favorite variation and use it to do rounds 10-14. Main color (MC) can be your team color or any color you want! Try to use a darker color so that the white letters in rounds 10-14 show up.

## Directions

Using MC, cast on 96 stitches using long tail cast on. Join in the round, being careful not to twist the stitches. PM to mark end of round.

*\*\* If you find the hat band is too loose or you just want a more snug fit at the bottom, use size #3 (4.25mm) needles for woman size or size #5 (3.75mm) needles for a man size to cast on and for the first 8 rows.*

Round 1-8: Using MC, (K2, P2) around. (96 sts)

Round 9: (K4, M1) around. (120 sts)

Round 10-14: Work desired variation of Chart 1 (see below). (120 sts)

*Remove stitch markers, if using, except the stitch marker that marks the beginning of the round.*

Round 15-16: Using MC, K around. Finish off MC. (120 sts)

Round 17-33: Work Chart 2. Finish off R and B. (120 sts)

*Remove stitch markers, if using, except the stitch marker that marks the beginning of the round.*

Round 34: Using W, K around. (120 sts)

Round 35-42: Join MC. Using MC, K around. (120 sts)

— *Start Decreases* —

*\*\*Use double-pointed needles or magic loop when the decreases are too small for circular needles*

*\*\* At this point, your hat length should measure 5.6" (14.2 cm) for a woman, and 6.25" (15.8 cm) for a man. If your hat is longer or shorter than this measurement, you may need to start decreasing a few rounds sooner or later than indicated. To do this, follow the decrease instructions starting on Round 43, but use the appropriate color for the round you are actually on so that you do not interrupt the color pattern.*

Round 43: (K10, K2tog, PM) around. (110 sts)

Round 44: K around. (110 sts)

Round 45: (K9, K2tog) around. (100 sts)

Round 46: K around. (100 sts)

Round 47: (K8, K2tog) around. (90 sts)

Round 48: K around. (90 sts)

Round 49: (K7, K2tog) around. (80 sts)

Round 50: K around. (80 sts)

Round 51: (K6, K2tog) around. (70 sts)

Round 52: K around. (70 sts)

Round 53: (K5, K2tog) around. (60 sts)

Round 54: K around. (60 sts)

Round 55: (K4, K2tog) around. (50 sts)

Round 56: K around. (50 sts)

Round 57: (K3, K2tog) around. (40 sts)

Round 58: (K2, K2tog) around. (30 sts)

Round 59: (K1, K2tog) around. (20 sts)

Round 60: K2tog around. Remove stitch markers, if using. (10 sts)

Cut a long tail, and use a yarn needle to put the tail through the remaining 10 stitches, removing them off the knitting needle as you put the stitch on the yarn needle. Pull tight, and weave in all ends.

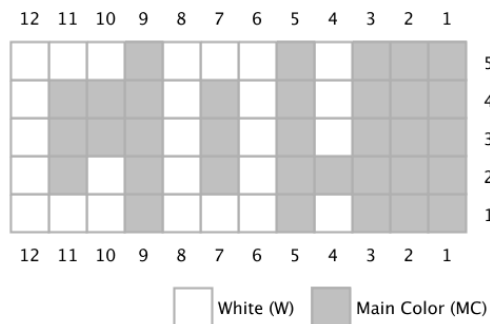
Optionally, add a pom-pom! A tutorial for making the pictured pom pom can be downloaded separately.

Wet block hat for best results.

# Chart 1 Go! Variation (pictured)

Rounds 10-14: Join W. Using W and MC, work Chart 1 10 times. (120 sts)

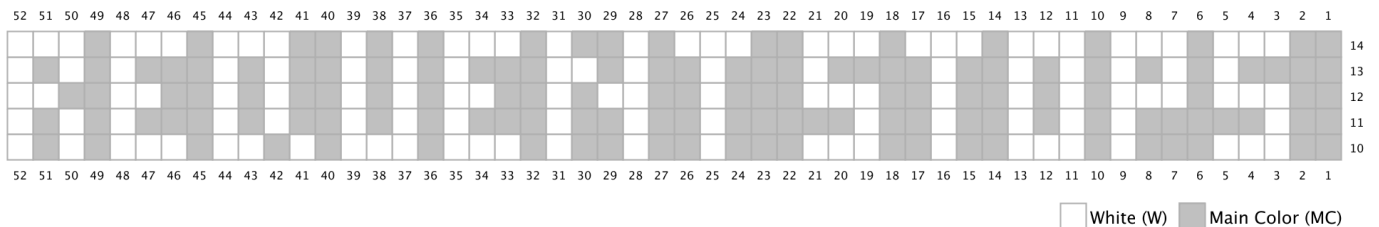
## Chart 1



# Chart 1 Caution Variation

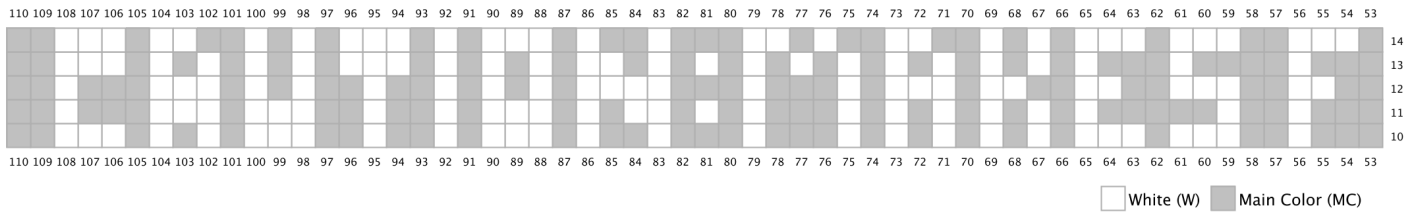
Rounds 10-14: Join W. Using W and MC, work Chart 1A once, PM, work Chart 1B once, PM, work Chart 1C 5 times. (120 sts)

## Chart 1A



*Text and images Copyright © 2016 by Mrs. Luedeke LLC, all rights reserved. Finished products created with this may be used for commercial sale. Pattern credit is appreciated. This pattern is not in anyway associated with Nintendo or any official Pokémon branding. It's a fan-made fun hat, provided free of charge.*

## Chart 1B



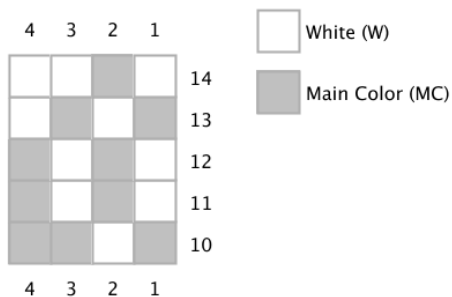
## Chart 1C



# Chart 1 Instinct Variation

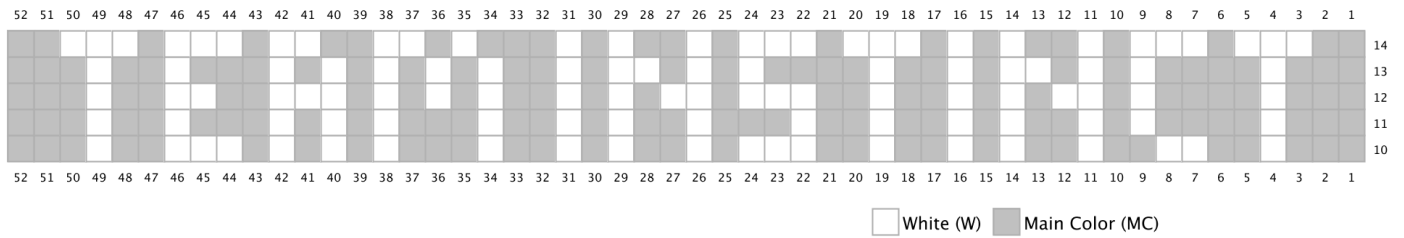
Rounds 10-14: Join W. Using W and MC, work Chart 1A 9 times, PM, work Chart 1B once, PM, work Chart 1A 8 times. (120 sts)

## Chart 1A



*Text and images Copyright © 2016 by Mrs. Luedeke LLC, all rights reserved. Finished products created with this may be used for commercial sale. Pattern credit is appreciated. This pattern is not in anyway associated with Nintendo or any official Pokémon branding. It's a fan-made fun hat, provided free of charge.*

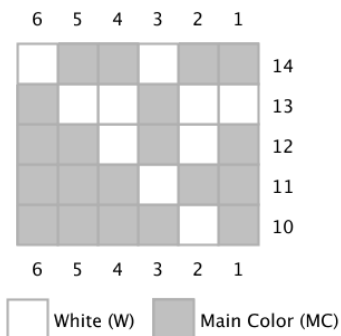
## Chart 1B



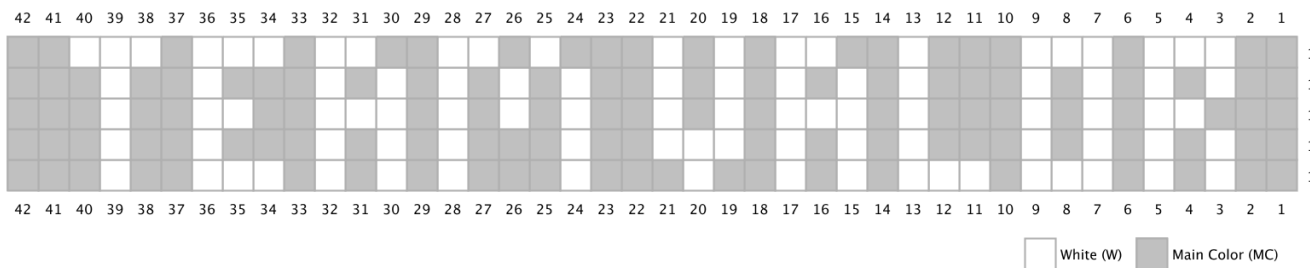
# Chart 1 Valor Variation

Rounds 10-14: Join W. Using W and MC, work Chart 1A 7 times, PM, work Chart 1B once, PM, work Chart 1A 6 times. (120 sts)

## Chart 1A



## Chart 1B



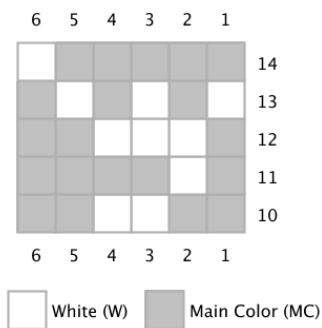
*Text and images Copyright © 2016 by Mrs. Luedeke LLC, all rights reserved. Finished products created with this may be used for commercial sale. Pattern credit is appreciated. This pattern is not in anyway associated with Nintendo or any official Pokémon branding. It's a fan-made fun hat, provided free of charge.*

# Chart 1 Mystic Variation

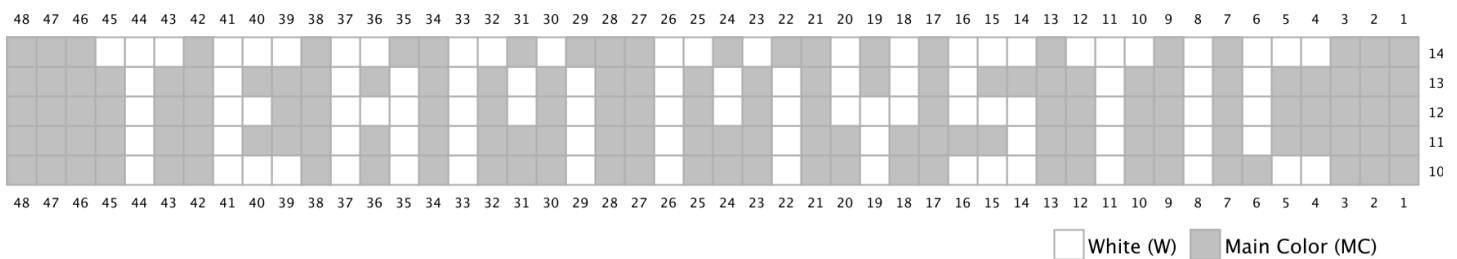
---

Rounds 10-14: Join W. Using W and MC, work Chart 1A 6 times, PM, work Chart 1B once, PM, work Chart 1A 6 times. (120 sts)

## Chart 1A



## Chart 1B

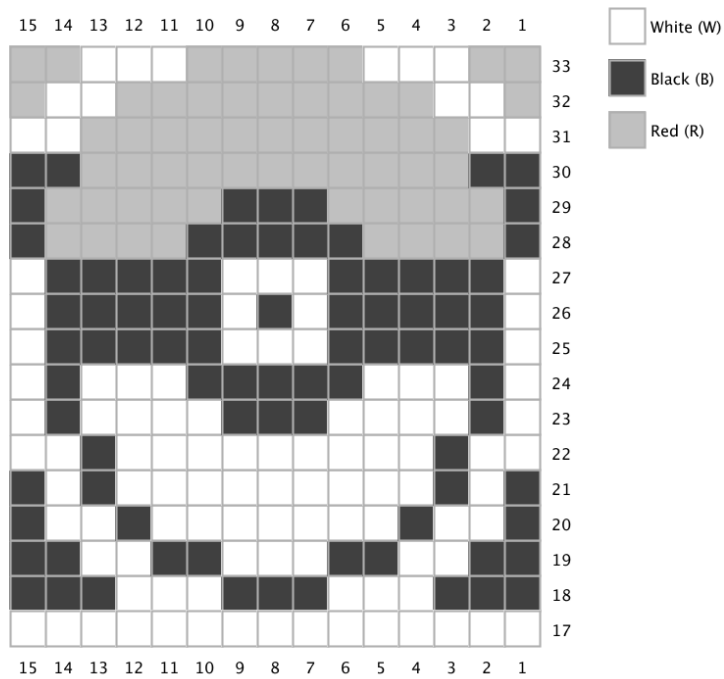



---

*Text and images Copyright © 2016 by Mrs. Luedeke LLC, all rights reserved. Finished products created with this may be used for commercial sale. Pattern credit is appreciated. This pattern is not in anyway associated with Nintendo or any official Pokémon branding. It's a fan-made fun hat, provided free of charge.*

# Chart 2

Rounds 17-33: Join W. Using W and MC, work Chart 2 around. (120 sts)



*Text and images Copyright © 2016 by Mrs. Luedeke LLC, all rights reserved. Finished products created with this may be used for commercial sale. Pattern credit is appreciated. This pattern is not in anyway associated with Nintendo or any official Pokémon branding. It's a fan-made fun hat, provided free of charge.*