

I'm With the Captain Hat

by Mrs. Luedeke

Size

Finished Size (adult): 19.2in around, 9in height
 (toddler): 17.5in around, 6.75in height
 Gauge (adult): 5 st/in
 (toddler): 5.5 st/in
 Needle Size (adult): #7 (4.5mm) circular needles
 (toddler): #5 (3.75mm) circular needles

Materials

Yarn:

ADULT (WORSTED)

Berroco Vintage
 5134 (R) 25yds
 51191 (B) 65yds
 5100 (W) 35yds

TODDLER (DK)

KnitPicks Cotlin DK
 Moroccan Red (R) 20 yds
 Nightfall (B) 55 yds
 Swan (W) 30 yds

Yarn needle

Stitch markers (optional)

Difficulty

This pattern uses two-color stranding with long floats. This pattern also is knit in the round with circular knitting needles and assumes the use of magic loop.

Stitch Abbreviations

K = knit K2tog = knit 2 together () = repeat
 M1 = make 1 *SM* = add a stitch marker (optional)

Notes

Thank you to [apollo1gcw](#), [Trace4545](#), [Love4Dogs](#), [docbg98](#), and [hhersey](#) for helping test! Needle size and yarn yardages are approximate. Please check gauge for best accuracy. Make 1 can be done by knitting into the front of the stitch and then the back (kfb) or any other make 1 stitch you prefer.



Text and images Copyright © 2016 by Mrs. Luedeke LLC, all rights reserved. No pattern may be reproduced or distributed — electronically, or by any other means, without written permission. Finished products created with this may be used for commercial sale. Pattern credit is appreciated.

Directions

Using B, cast on 76 stitches, preferably using long tail cast on. Join in the round, being careful not to twist the stitches. *Optionally add a stitch marker to mark beginning of row.*

*** If you find the hat band is too loose or you just want a more snug fit at the bottom, use size #6 (4.25mm)—or for a toddler size #4 (3.5mm)—needles to cast on and for the first 5 rows.*

Round 1-5: Using B, (K2, P2) around. (76 sts)

Round 6: Using B, ((K4, M1) 4 times, K3, M1) around. (96 sts)

Round 7: Using B, K around. (96 sts)

Round 8-19: Join W. Using W and B, work Chart 1 around. (96 sts)

Round 20: Using B, K around. (96 sts)

Round 21-24: Join R. Using R and W, work knit as follows; (2R, 2W) around. (96 sts)

Round 25: Using B, K around. (96 sts)

Round 26-29: Using W and B, work Chart 2A 7 times, *SM*, work Chart 2B once, *SM*, work Chart 2A 6 times. (96 sts)

Remove stitch markers, if using, except the stitch marker that marks the beginning of the round.

Round 30: Using W, K around. (96 sts)

Round 31: Using R, K around. (96 sts)

Round 32-35: Using W and R, work Chart 3 around. Finish off W. (96 sts)

Round 36: Using R, K around. (96 sts)

— *Start Decreases* —

***Use double-pointed needles or magic loop when the decreases are too small for circular needles*

*** At this point, your hat should measure around 5 3/4" (14.6 cm) for an adult, and 4 1/2-4 3/4" (11.5-12 cm) for a toddler. If your hat is longer or shorter than this measurement, you may need to start decreasing a few rounds sooner or later than indicated. To do this, follow the decrease instructions starting on Round 37, but use the appropriate color for the round you are actually on so that you do not interrupt the color pattern.*

Round 37: Using R, (K10, K2tog, *SM*) around. Finish off R. (88 sts)

Round 38: Using B, K around. (88 sts)

Round 39: Using B, (K9, K2tog) around. (80 sts)

Round 40: Using B, K around. (80 sts)

Round 41: Using B, (K8, K2tog) around. (72 sts)

Round 42: Using B, K around. (72 sts)

Round 43: Using B, (K7, K2tog) around. (64 sts)

Round 44: Using B, K around. (64 sts)

Round 45: Using B, (K6, K2tog) around. (56 sts)

Round 46: Using B, K around. (56 sts)

Round 47: Using B, (K5, K2tog) around. (48 sts)

Round 48: Using B, K around. (48 sts)

Round 49: Using B, (K4, K2tog) around. (40 sts)

Round 50: Using B, (K3, K2tog) around. (32 sts)

Round 51: Using B, (K2, K2tog) around. (24 sts)

Round 52: Using B, (K1, K2tog) around. (16 sts)

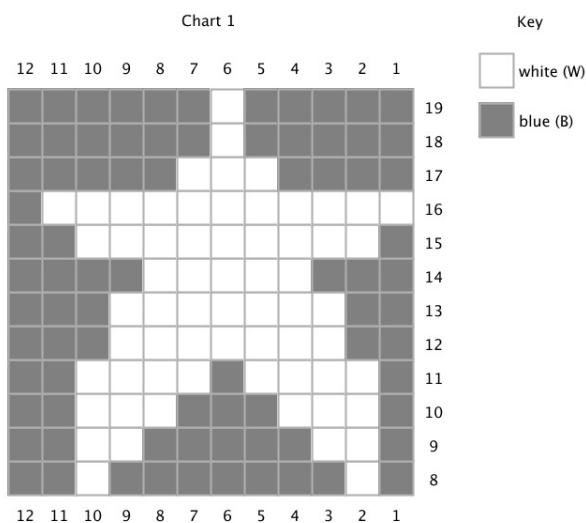
Round 53: Using B, K2tog around. Remove stitch markers. (8 sts)

Cut a long tail, and use a yarn needle to put the tail through the remaining 8 stitches, removing them off the knitting needle as you put the stitch on the yarn needle. Pull tight, and weave in all ends.

Wet block hat for best results.

Charts

Chart 1



Written Directions

Round 8: Work knit as follows; (1B, 1W, 7B, 1W, 2B) 8 times. (96 sts)

Round 9: Work knit as follows; (1B, 2W, 5B, 2W, 2B) 8 times. (96 sts)

Round 10: Work knit as follows; (1B, 3W, 3B, 3W, 2B) 8 times. (96 sts)

Round 11: Work knit as follows; (1B, 4W, 1B, 4W, 2B) 8 times. (96 sts)

Round 12-13: Work knit as follows; (2B, 7W, 3B) 8 times. (96 sts)

Round 14: Work knit as follows; (3B, 5W, 4B) 8 times. (96 sts)

Round 15: Work knit as follows; (1B, 9W, 2B) 8 times. (96 sts)

Round 16: Work knit as follows; (11W, 1B) 8 times. (96 sts)

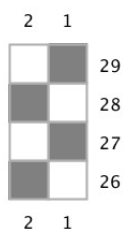
Round 17: Work knit as follows; (4B, 3W, 5B) 8 times. (96 sts)

Round 18-19: Work knit as follows; (5B, 1W, 6B) 8 times. (96 sts)

Text and images Copyright © 2016 by Mrs. Luedeke LLC, all rights reserved. No pattern may be reproduced or distributed — electronically, or by any other means, without written permission. Finished products created with this may be used for commercial sale. Pattern credit is appreciated.

Chart 2A

Chart 2A



Key



Written Directions

Round 26: Work knit as follows; 1 W, 1 B.

Round 27: Work knit as follows; 1 B, 1 W.

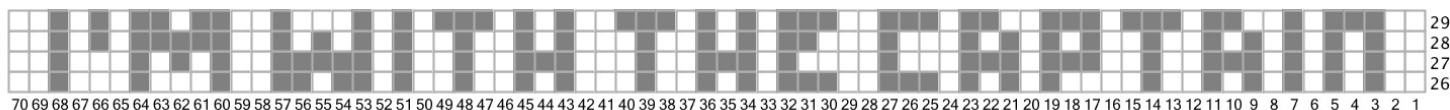
Round 28: Work knit as follows; 1 W, 1 B.

Round 29: Work knit as follows; 1 B, 1 W.

Chart 2B

Chart 2B

white (W) blue (B)



Written Directions

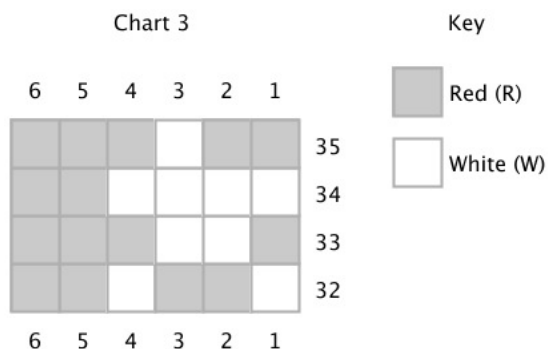
Round 26: Work knit as follows; 2W, (1B, 1W) 4 times, 1B, 2W, 1B, 4W, (1B, 1W) 3 times, 3B, 2W, 3B, (1W, 1B) 2 times, 2W, 1B, 3W, 1B, 1W, (1B, 2W) 2 times, 1B, (1W, 2B) 2 times, 2W, (1B, 3W) 2 times, 1B, 2W. (70 sts)

Round 27: Work knit as follows; 2W, (1B, 1W) 3 times, 3B, 2W, 1B, 2W, 3B, 1W, 3B, 3W, 1B, 4W, 1B, 1W, 3B, 2W, 1B, 3W, 3B, (2W, 1B) 2 times, 1W, 5B, 2W, (1B, 1W) 2 times, 1B, 3W, 1B, 2W. (70 sts)

Round 28: Work knit as follows; 2W, (1B, 1W) 4 times, (1B, 2W) 2 times, (1B, 1W) 3 times, (1B, 3W) 2 times, 2B, (1W, 1B) 2 times, 2W, 1B, 3W, 1B, 1W, (1B, 2W) 2 times, (1B, 1W) 3 times, 1B, 2W, 5B, (1W, 1B) 2 times, 2W. (70 sts)

Round 29: Work knit as follows; 2W, 3B, 1W, 1B, 2W, 2B, (1W, 3B) 2 times, 2W, 2B, 1W, 3B, 2W, 3B, (1W, 1B) 2 times, 1W, 3B, 2W, (1B, 1W) 2 times, 3B, (1W, 1B) 2 times, 3W, 1B, 2W, (2B, 1W) 2 times, 1B, 1W, 1B, 2W. (70 sts)

Chart 3



Written Directions

Round 32: Work knit as follows; (1W, 2R, 1W, 2R) 16 times. (96 sts)

Round 33: Work knit as follows; (1R, 2W, 3R) 16 times. (96 sts)

Round 34: Work knit as follows; (4W, 2R) 16 times. (96 sts)

Round 35: Work knit as follows; (2R, 1W, 3R) 16 times. (96 sts)